

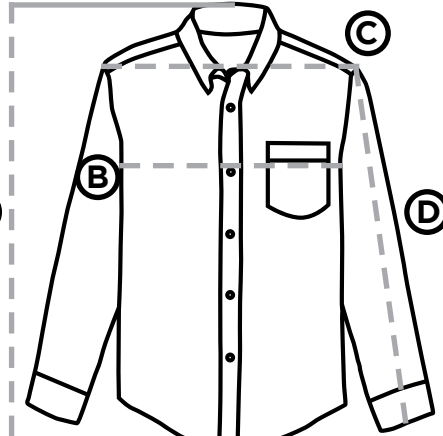
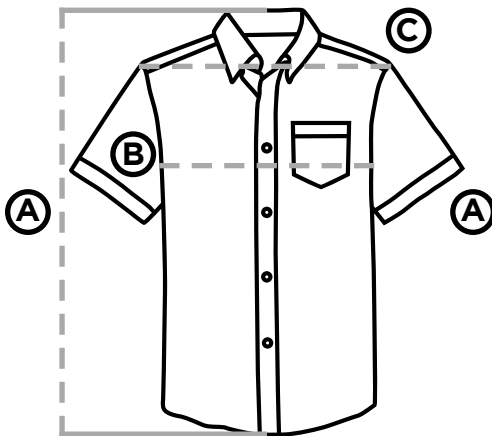
## Oxford Shirt - Size Guide

The numbers below each size are the actual garment measurements in inches.

	Size Youth 4	Size Youth 6	Size Youth 8	Size Youth 10	Size Youth 12	Size Youth 14	Size Youth 16	Size Youth 18
<b>Short Sleeve</b>								
<b>A. Length - Center of Back</b>	19 1/2	21 1/2	22	23 1/2	24	25	26 1/2	28
<b>B. Chest - Around</b>	28	30	32	34	34 1/2	36	39	40
<b>C. Shoulder</b>	11 1/2	12 1/2	13	14	14 1/2	15 1/2	16	16 1/2

	Size Youth 6	Size Youth 8	Size Youth 10	Size Youth 12	Size Youth 14	Size Youth 16	Size Youth 18	Size Youth 20
<b>Long Sleeve</b>								
<b>A. Length - Center of Back</b>	20 1/2	22	23	24	25	26 1/2	28	29
<b>B. Chest - Around</b>	30 1/2	32	34	34 1/2	36	39	40	41
<b>C. Shoulders</b>	12	13	14	14 1/2	15 1/2	16	16 1/2	17
<b>D. Sleeve Length - Top of Sleeve</b>	17 1/2	18 1/4	19	20	21	22 1/2	23 1/2	24

	Adult S	Adult M	Adult L	Adult XL
<b>Long Sleeve</b>				
<b>A. Length - Center of Back</b>	30	30 1/2	31 1/2	32
<b>B. Chest - Around</b>	40	44	46	52
<b>C. Shoulders</b>	16 1/2	17 1/2	18 1/2	20
<b>D. Sleeve Length - Top of Sleeve</b>	24	24 1/2	25 1/2	25 1/2



**A = Length - Center of Back**

**B = Around Chest (all the way around)**

**C = Across Shoulders**

**D = Sleeve Length - Top of Sleeve**