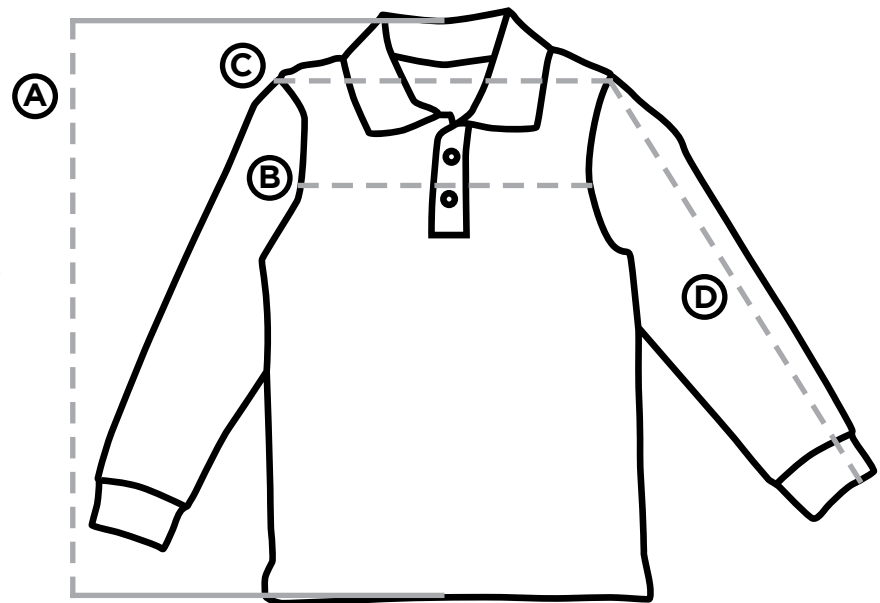
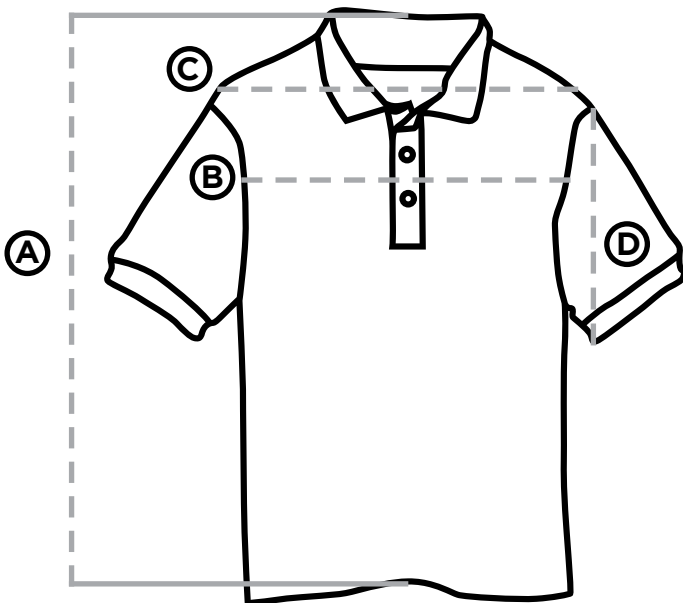


Polo - Size Guide

The numbers below each size are the actual garment measurements in inches.

Short Sleeve - Youth	Size 3	Size 4	Size 6	Size 8	Size 10/12	Size 14/16	Size 18
A. Length - Center of Back	17 3/4	18 1/2	19 5/8	20 7/8	21 7/8	23 1/4	24 3/8
B. Chest - Around	27 1/8	28	29 1/8	30 3/8	31 7/8	34 1/4	36 1/4
C. Shoulders	11	11 3/8	12	12 1/2	13 1/2	14 3/4	15 1/2
D. Sleeve Length - Top of Sleeve	6 1/8	6 3/8	6 5/8	7	7 1/4	7 1/2	7 7/8

Short Sleeve - Adult	Size S	Size M	Size L	Size XL
A. Length - Center of Back	28	28 3/4	30	31 1/8
B. Chest - Around	37 3/4	40 1/8	43 5/8	47 1/4
C. Shoulders	17 3/4	18 3/8	19	19 5/8
D. Sleeve Length - Top of Sleeve	8 1/2	8 7/8	9 1/4	9 5/8



A = Length - Center of Back

B = Around Chest (all the way around)

C = Across Shoulders

D = Sleeve Length - Top of Sleeve